

JIALIFT®



www.jialift.com.au

CL1236E-S

Full Electric Walkie Stacker

- 1200kg Capacity; Max Lifting Height - 3600mm
- Walk-behind operate no license required
- Safe, reliable, sustainable and low maintenance

CE

Full Electric Walkie Stacker - straddle leg (1200kg/3600mm)

- Walk behind operate no licence required
- Straddle leg design ideal for lifting enclosed pallet
- Can be used for both open pallet and for Australia standard closed pallet (CHEP)
- Control panel: Red Stop Bottom, Key Switch and Battery Indicator on the Right . In-built charger in the middle
- The in-built charger is single phase (wall plug) can be easily charged
- With a small turning radius, this stacker is suitable for narrow spaces.
- Intelligent control and drive technology, flexible and safe operating
- Adjustable fork width Easy service and maintenance
- The steering wheel seat in the middle.
- Adjustable driving speed switch.
- The turtle speed switch on the handle makes low-speed control more precise.

Standard Equipment:

Also Included in our Offer: Battery and Charger

Warranty: 5 Years refer to the JIALIFT warranty terms and conditions



JIALIFT AUSTRALIA PTY LTD

Call Us: 1300 000 168 Email: sales@jialift.com.au

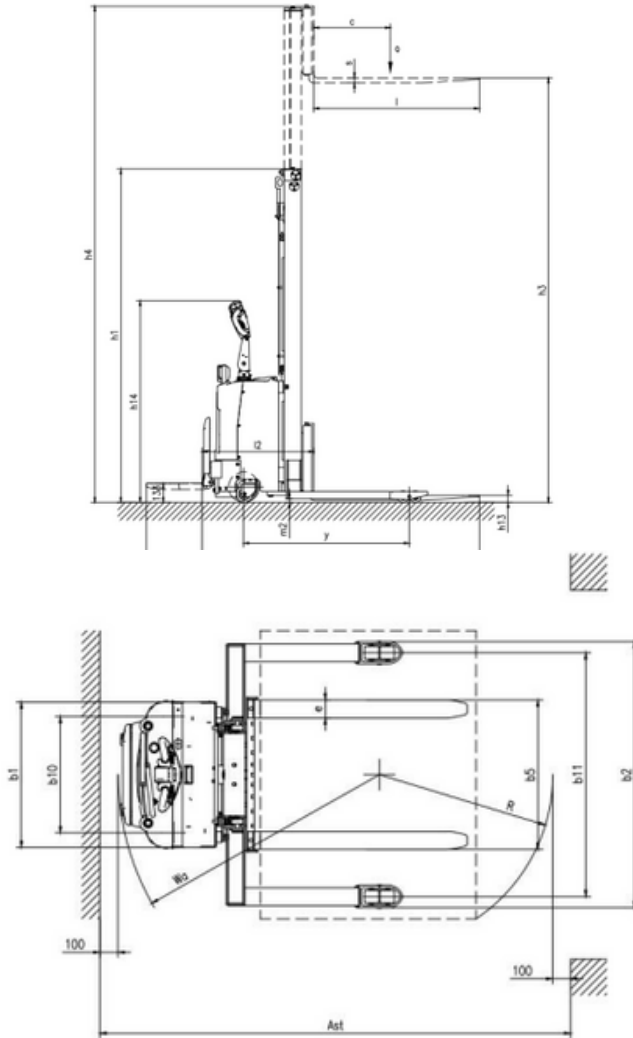
46-48 Geddes St, Mulgrave VIC 3170 Open at 8:30 am - 5:30 pm, Monday-Friday



www.jialift.com.au

JIALIFT®

MATERIAL HANDLING EQUIPMENT



JIALIFT AUSTRALIA PTY LTD

Call Us: 1300 000 168 Email: sales@jialift.com.au

46-48 Geddes St, Mulgrave VIC 3170 Open at 8:30 am - 5:30 pm, Monday-Friday



www.jialift.com.au

Distinguishing mark		
Model designation		CL1236E-S
Load capacity	kg	1200
Load capacity on max. Height	kg	600
Max lifting height	mm	3600
Load center distance	mm	600
Weight		
Service weight	kg	840
Dimensions		
Fork length	mm	1150
Single fork width	mm	100
Lowered fork height	mm	86
Fixed leg length	mm	875
Single fixed leg width	mm	124
Inside width between fixed legs	mm	1230
Outside width between fixed legs	mm	1630
Turning radius	mm	1460
Overall length(with Pedal)	mm	1914(2314)
Overall width	mm	1630
Lowered mast height	mm	2320
Extended mast height	mm	4087
Types, Chassis		
Front wheel size, number	mm	ø80x70, 4
Rear wheel size, number	mm	ø250x80, 1
Balance wheel size, number	mm	ø150x58, 2
Performance data		
Driving speed, laden/ unladen	km/ h	4.8/4
Lifting speed, laden/ unladen	mm/ s	130/82
Lowering speed, laden/ unladen	mm/ s	141/133
Electric-engine		
Drive motor rating	kW	1.5
Lift motor rating	kW	2.2
The charger		24V/10A
Battery voltage/nominal capacity		2x12V/120AH



JIALIFT AUSTRALIA PTY LTD

Call Us: 1300 000 168 Email: sales@jialift.com.au

46-48 Geddes St, Mulgrave VIC 3170 Open at 8:30 am - 5:30 pm, Monday-Friday

www.jialift.com.au