

CL1325/35/40 GHY-W

Full Electric Walkie Stacker

- Walk-behind operate no license required
- Safe, reliable, sustainable and low maintenance
- Straddle adjustable leg design ideal for lifting enclosed pallet
- Can be used for both open pallet and for Australia standard closed pallet (CHEP)
- Control panel: Red Stop Bottom, Key Switch and Battery Indicator on the Right . In-built charger in the middle
- The in-built charger is single phrase (wall plug) can be easily charged.
- With a small turning radius, this stacker is suitable for narrow spaces.
- Intelligent control and drive technology, flexible and safe operating
- Adjustable fork width Easy service and maintenance
- The steering wheel seat in the middle.
- Adjustable driving speed switch.
- The turtle speed switch on the handle makes low-speed control more precise.
- Germany imported waterproof micro-switches are applied in the cold, damp, dusty and other harsh environments.
- YONGCI motor drive system is with small size, light weight, low loss and high efficiency.



CL1325/35/40 GHY-W

Manufacturer's Data and Technical Characteristics				
Manufacturer		JIALIFT®		
Model designation	sku	CL1325GHY-W	CL1335GHY-W	CL1340GHY-W
Load capacity	kg	1300		
Load capacity on max. Height	kg	1300	600	300
Max lifting height	mm	2500	3500	4000
Load centre distance	mm	600		
Weight				
Service weight	kg	615	639	651
Dimensions				
Fork length	mm	1150		
Single fork width	mm	100		
Overall fork width	mm	210-850		
Lowered fork height	mm	65		
Adjustable leg length	mm	1057		
Single leg width (including front wheel frame)	mm	100		
Inside width of two adjustable legs	mm	924-1324		
Outside width of two adjustable legs	mm	1124-1524		
Turning radius	mm	1380		
Aisle width for pallets 1200×1200 crossway	mm	2365		
Overall length	mm	1825		
Overall width	mm	1124-1524		
Extended mast height	mm	2952	3952	4452
Collapsed mast height	mm	1745	2245	2495
Types, Chassis				
Front wheel size, number	mm	Φ80×60, 2		
Rear wheel size, number	mm	Φ210×70, 1		
Performance data				
Driving speed, laden/ unladen	km/ h	4.2		
Lifting speed, laden/ unladen	mm/ s	92/136		
Lowering speed, laden/ unladen	mm/ s	112/98		
Electric-engine				
Drive motor rating	kW	0.75		
Lift motor rating	kW	2.2		
The controller		1212P		
The charger		10A		
Battery voltage/nominal capacity		2x12V/100Ah		
Battery dimensions	Mm	2 x (260 x 168 x 215)		
Battery Weight	kg	2 x 27		

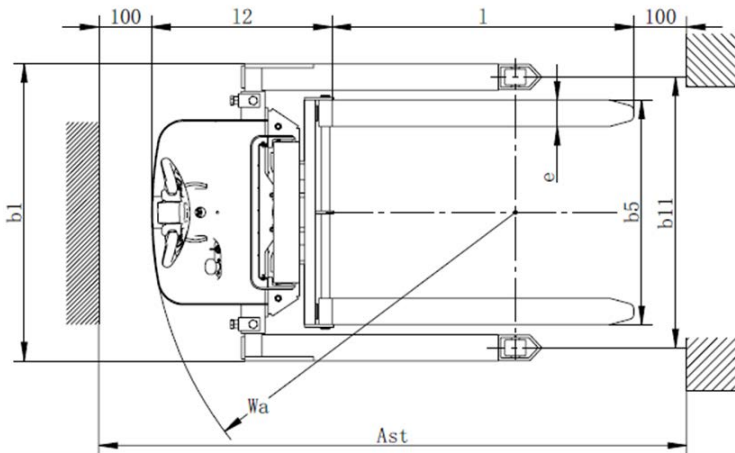
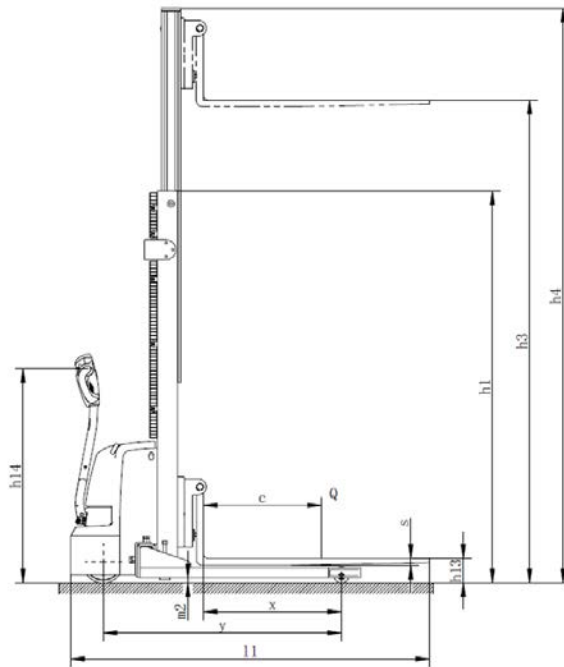


JIALIFT AUSTRALIA PTY LTD

Call Us: 1300 000 168 Email: sales@jialift.com.au

www.jialift.com.au

CL1325/35/40 GHY-W



JIALIFT AUSTRALIA PTY LTD

Call Us: 1300 000 168 Email: sales@jialift.com.au

www.jialift.com.au